

Have you ever seen a stock chart like this and thought, “If I had seen this signal when it formed, I would have taken the trade”?



But you don’t have the time to track the stock market daily.

To solve this problem, I created a tool that lets you build a watchlist in very little time and makes tracking it extremely easy. This app is a smart watchlist creator. Let’s see how it works and how it can save you tons of time — especially if you’re working a full-time job or running a business.

Note: I’ve highlighted the buttons I’m talking about with a green box.

1. Login Page – Simply log in by clicking “Login with Gmail.”

2. After logging in, you'll see this page.

The screenshot shows the top navigation bar with links: Home, My Watchlist, Upload, Subscribe, and Other. The user is logged in as 'chartqueuedemo@gmail.com' with a Logout button. The main form contains the following fields:

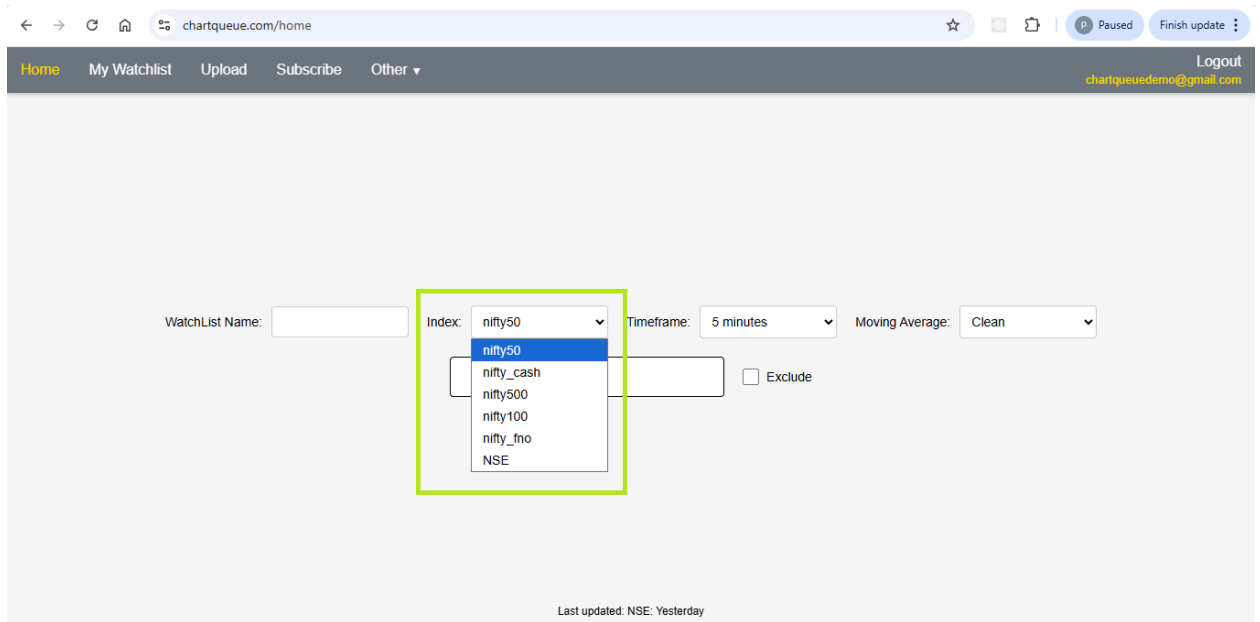
- WatchList Name:
- Index:
- Timeframe:
- Moving Average:

Below the form is an 'Apply' button and an 'Exclude' checkbox. At the bottom, it says 'Last updated: NSE: Yesterday'.

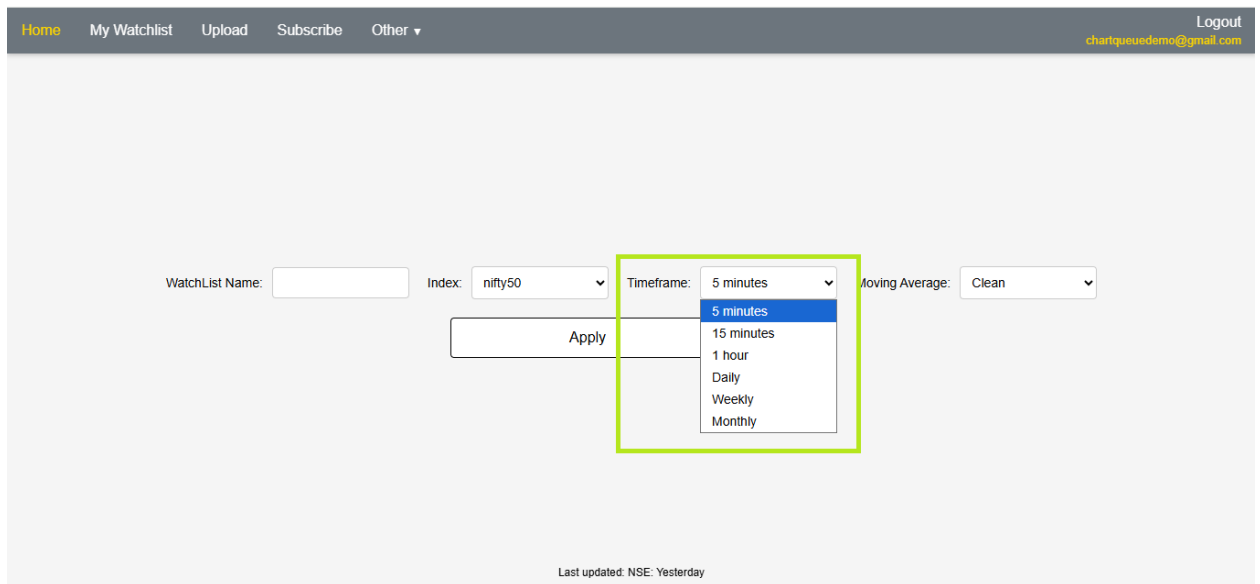
3. Here, you can type a watchlist name. If no name is given, it will use a random timestamp as the name.

This screenshot is identical to the previous one, but the 'WatchList Name' input field is highlighted with a green border. The 'Timeframe' dropdown is now set to '5 minutes'.

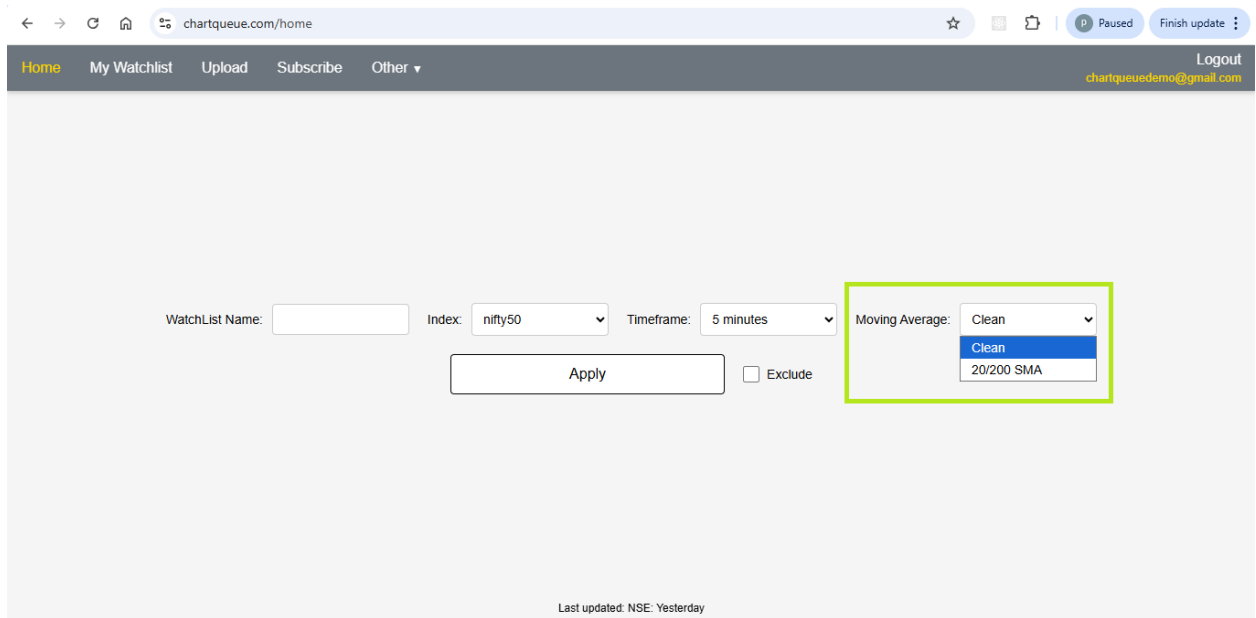
4. This is the list of indexes or exchanges — choose the ones you're interested in.



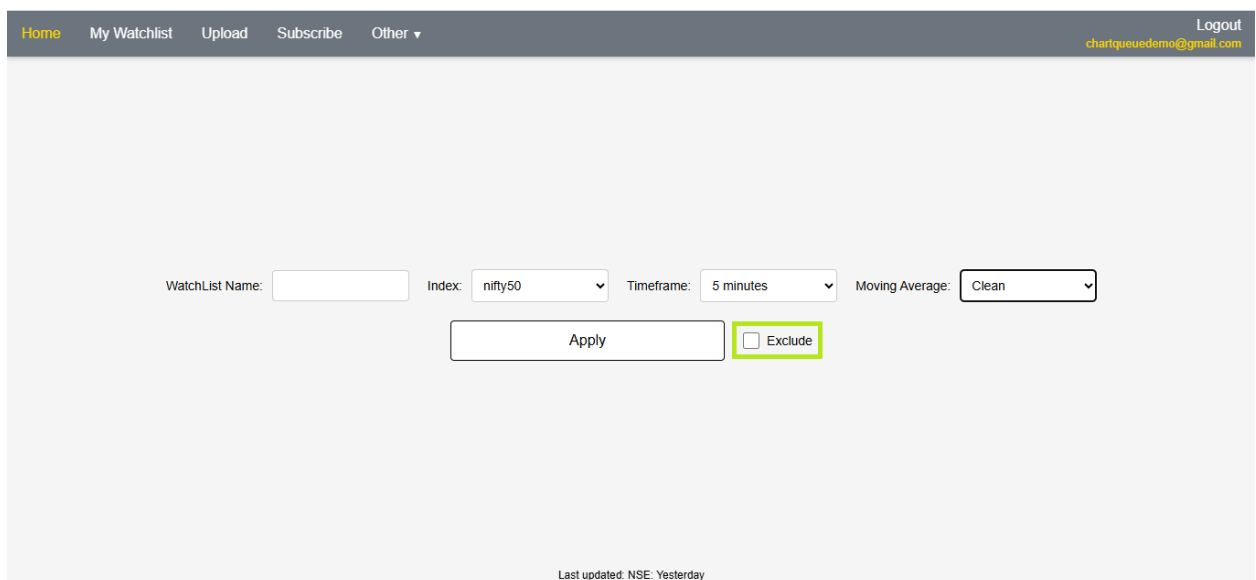
5. Select the timeframe you're interested in.



6. Choose whether to show the 20- and 200-period moving averages, or a clean chart without any indicators.



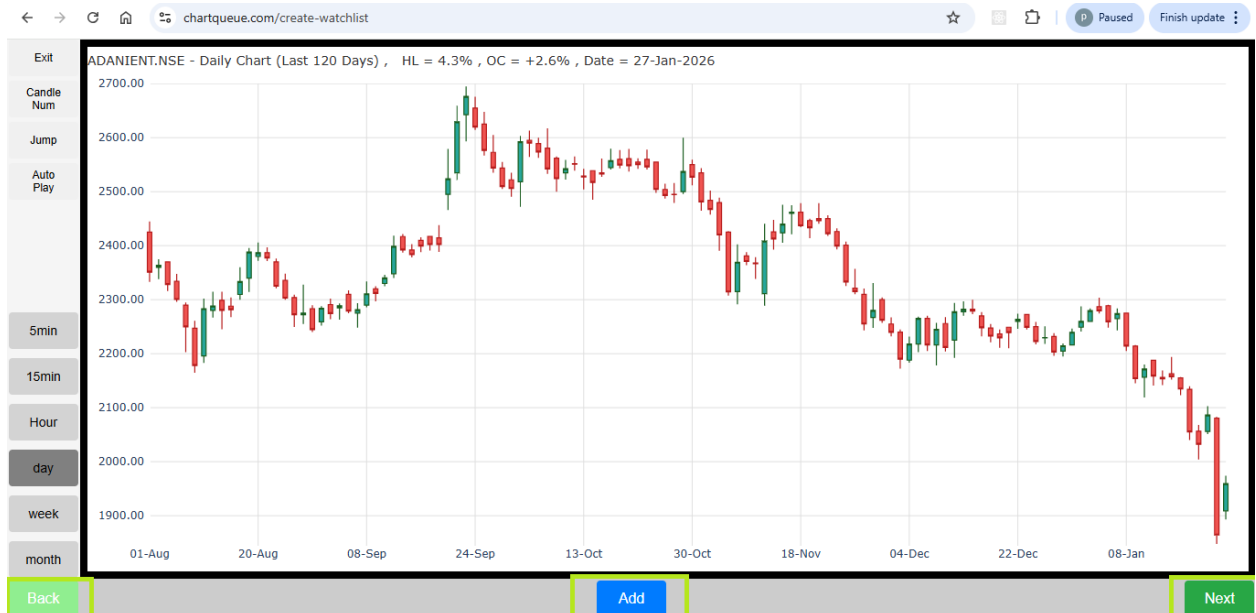
7. If you check the “Exclude” button, it will hide stocks already added to a watchlist (for that exchange, timeframe, and moving average setting).



8. Click **Apply** to open the following window:
 - a. Keep clicking **Next** to see the next stock, and **Back** to see the previous one.
 - b. On a laptop, you can use the left and right arrow keys instead.

- c. You can also use the keyboard up and down arrow to change the timeframe.

Note that the timeframe will automatically reset the original chosen timeframe as you move to the next stock.



If you're interested in a stock, click **Add**. It will be added to your watchlist. We'll see how to view watchlists shortly.

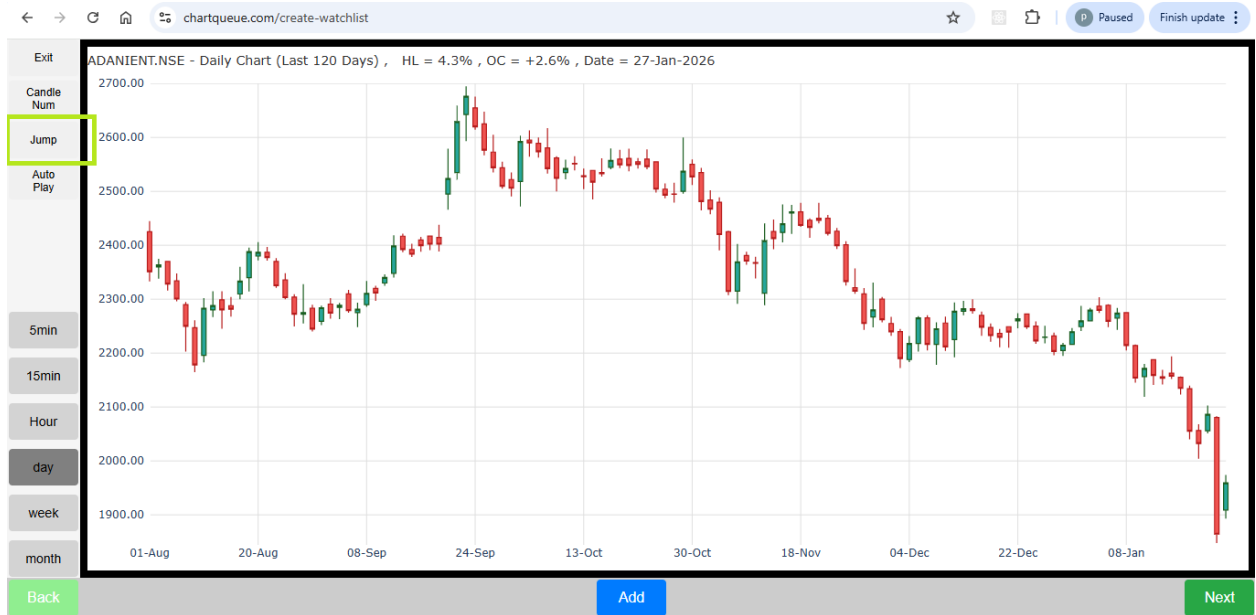
9. The number of candles shown in the chart is fixed. Please choose the candle count based on your screen size:
- a. **80 candles** → for mobile
 - b. **120 candles** → for small to mid-size laptops
 - c. **140+ candles** → for larger monitors and laptops



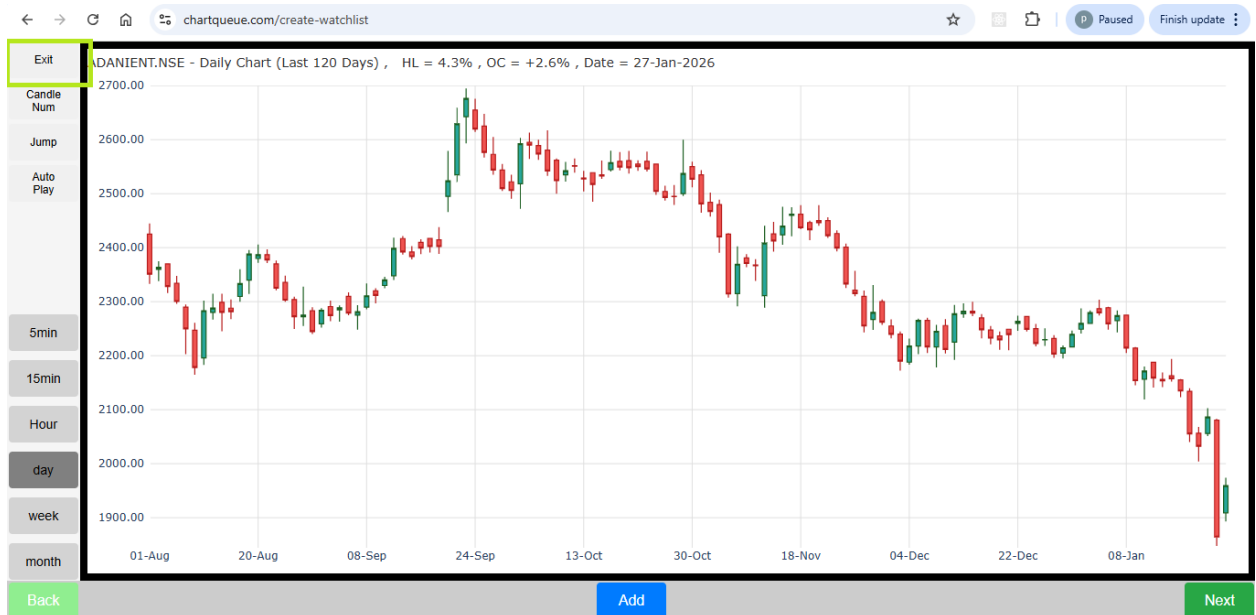
10. **Autoplay** lets you avoid clicking Next manually — it will automatically advance after a set interval.



11. **Jump Button** – Some indexes contain many symbols (e.g., NSE has ~2600). If you exit after viewing 500 symbols, the Jump button will take you back to where you left off when you return.



12. Use the **Exit** button to close this window.



To manage your existing watchlists, go to the **My Watchlists** tab.

[Home](#)
[My Watchlist](#)
[Upload](#)
[Subscribe](#)
[Other ▾](#)
Logout
chartqueuedemo@gmail.com

WatchList Name:
 Index:
 Timeframe:
 Moving Average:

☐ Exclude

Last updated: NSE: Yesterday

13. After creating a few watchlists, your My watchlist page will look similar to this.

Home

My Watchlist

Upload

Subscribe

Other ▾

Logout
chartqueuedemo@gmail.com

1.	doji-day-clean	View	Edit	Download	Delete	Rename
2.	hammer-day-clean	View	Edit	Download	Delete	Rename
3.	moribozu-day-clean	View	Edit	Download	Delete	Rename
4.	31JAN2026_08:01:18am-day-clean	View	Edit	Download	Delete	Rename
5.	31JAN2026_08:01:22am-day-clean	View	Edit	Download	Delete	Rename
6.	31JAN2026_08:01:26am-day-clean	View	Edit	Download	Delete	Rename
7.	31JAN2026_08:01:37am-week-clean	View	Edit	Download	Delete	Rename

14. The following operations can be performed on a watchlist: view, edit, download, delete, and rename.

HomeMy WatchlistUploadSubscribeOther

Logout
chariqueusdemo@gmail.com

1.	doji-day-clean	View	Edit	Download	Delete	Rename
2.	hammer-day-clean	View	Edit	Download	Delete	Rename
3.	moribozu-day-clean	View	Edit	Download	Delete	Rename
4.	31JAN2026_08:01:18am-day-clean	View	Edit	Download	Delete	Rename
5.	31JAN2026_08:01:22am-day-clean	View	Edit	Download	Delete	Rename
6.	31JAN2026_08:01:26am-day-clean	View	Edit	Download	Delete	Rename
7.	31JAN2026_08:01:37am-week-clean	View	Edit	Download	Delete	Rename

15. Click **View** to see the stocks in your watchlist.



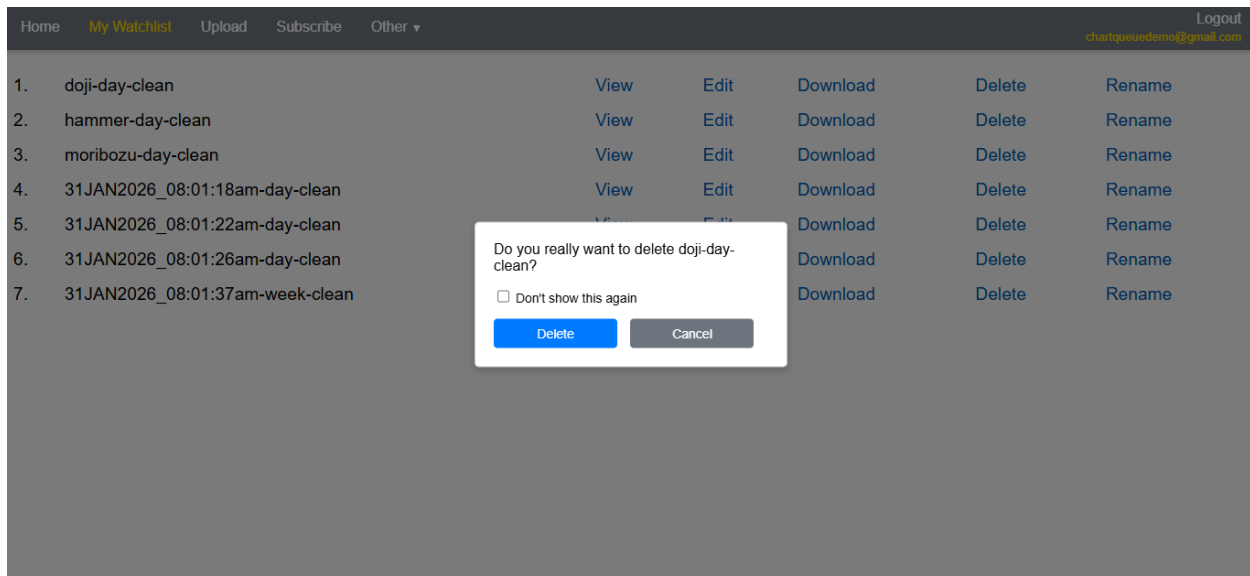
16. Click Edit to remove stocks from your watchlist. This will delete the selected symbol from the list.



17. You can also download all symbols as a CSV file.

Home My Watchlist Upload Subscribe Other ▾					Logout chartqueuedemo@gmail.com	
1.	doji-day-clean	View	Edit	Download	Delete	Rename
2.	hammer-day-clean	View	Edit	Download	Delete	Rename
3.	moribozu-day-clean	View	Edit	Download	Delete	Rename
4.	31JAN2026_08:01:18am-day-clean	View	Edit	Download	Delete	Rename
5.	31JAN2026_08:01:22am-day-clean	View	Edit	Download	Delete	Rename
6.	31JAN2026_08:01:26am-day-clean	View	Edit	Download	Delete	Rename
7.	31JAN2026_08:01:37am-week-clean	View	Edit	Download	Delete	Rename

18. Click Delete to delete a watchlist.

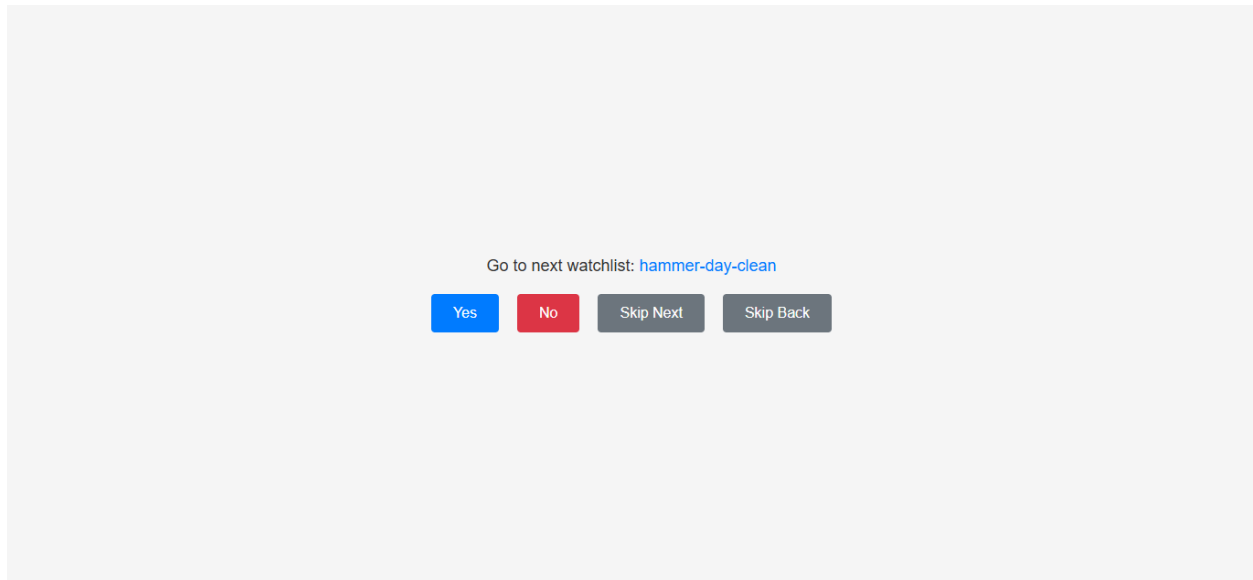


- If you check “Don’t show again,” the setting will only apply temporarily—while you remain in the My Watchlists tab. Once you leave, confirmation prompts will reappear.
- This feature is helpful if you have accumulated many watchlists over time and want to delete several quickly.

You can also rename any existing watchlist.

19. Once you reach the last stock in the watchlist and click **Next**, this window will appear.

- Click **Yes** to move to the next watchlist.
- Click **No** to return to the **My Watchlist** tab.
- Click **Skip Next** or **Skip Back** to move forward or backward through the watchlist.



20. Upload Tab – If you use a screener, you can export its results to a CSV file and import it here. Only the symbols from your file will be displayed. This can save significant amounts of time.

A screenshot of the "Upload" tab in a web application. The top navigation bar includes "Home", "My Watchlist", "Upload" (highlighted with a yellow box), "Subscribe", and "Other ▾". On the right of the bar is a "Logout" link and the email "chartqueuedemo@gmail.com". The main content area contains a form with the following fields: "WatchList Name:" with a dropdown menu showing "Default Name"; "File Name:" with a button labeled "Upload a File"; "Exchange:" with a dropdown menu showing "NSE"; "Timeframe:" with a dropdown menu showing "week"; and "Moving Average:" with a dropdown menu showing "clean". Below these fields is a large "Apply" button.

21. The site is free to use for now but soon there will be a separate category for free and subscribed users.

[Home](#) [My Watchlist](#) [Upload](#) [Subscribe](#) [Other](#) [Logout](#)
chartqueuedemo@gmail.com

Current Credits: 99969
Valid until: 5 June 2025

Buy Premium Credits ₹100 (~\$1.20)

100,000 credit points

Valid until March 2, 2026

-

1

+

Subscribe Now

Note: One credit is consumed for one change in chart in any case

Free user will be credited 50 points per day.

22. Data Update Limitation – Data is updated in the backend 3 hours after market close. You can verify the update time in two ways:

- Check the footer to see if it displays “Today.”
- Look for the timestamp within the chart itself.

[Home](#) [My Watchlist](#) [Upload](#) [Subscribe](#) [Other](#) [Logout](#)
chartqueuedemo@gmail.com

WatchList Name:

Index:

nifty50

Timeframe:

Daily

Moving Average:

Clean

Apply

☐ Exclude

Last updated: NSE: Yesterday



Note: “HL” refers to the difference between the High and Low prices, while “OC” refers to the difference between the Open and Close prices.

23. Other is mostly policy related and contact; users can go through these pages.

24. The site displays a mobile-friendly UI when accessed on a mobile device.

3:21



chartqueue.com/logo



Login

Email:

Password:

☐ Remember Me

Login

Don't have an account? [Create one](#)

OR

Login by Gmail

[How do I use this site?](#)

3:22

chartqueue.com/home

15

Logout

chartqueuedemo@gmail.com

WatchList Name:

Index:

nifty50

Timeframe:

5 minutes

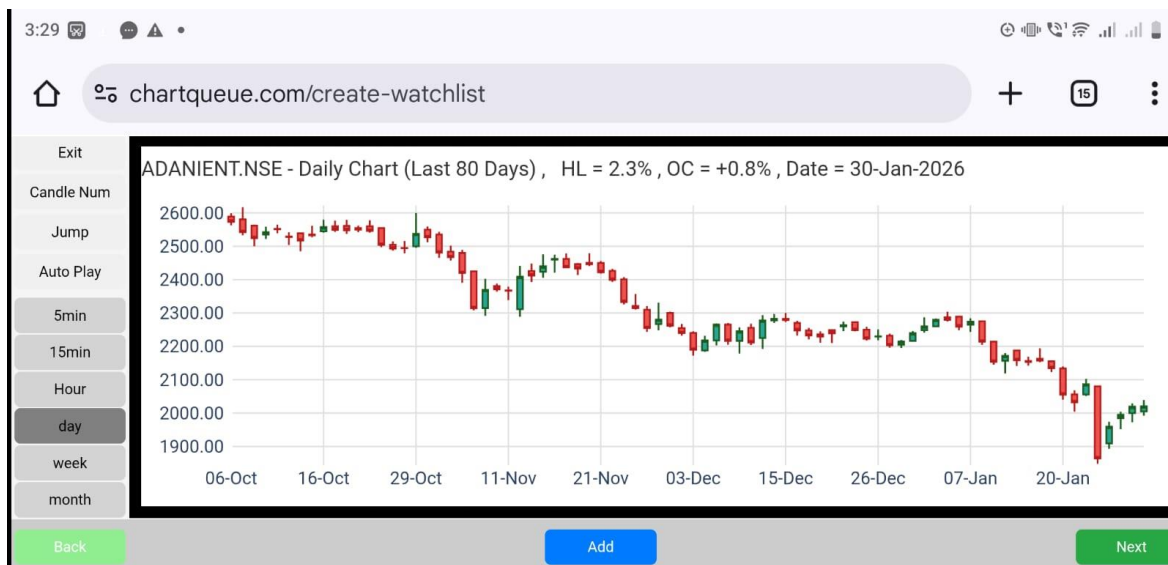
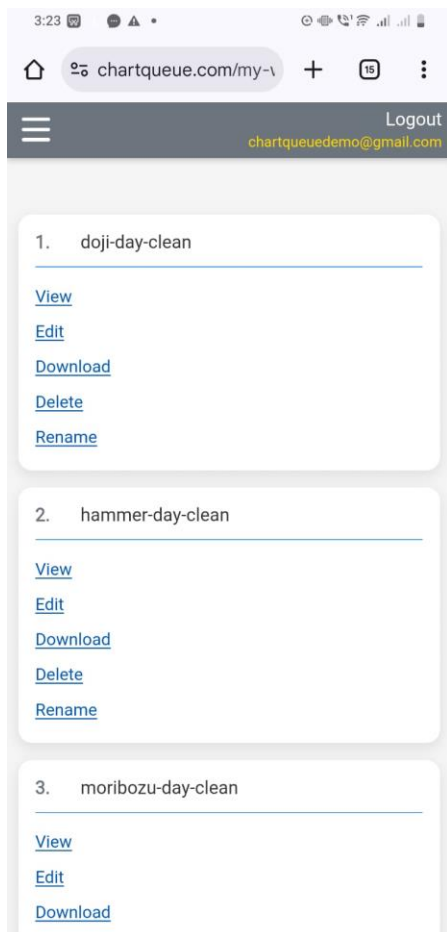
Moving Average:

Clean

Apply

☐ Exclude

Last updated: NSE: Yesterday



Thank you for reading! Please share your feedback and suggestions at support@chartqueue.com.

If this tool saves you even 5 minutes of your time, we will consider this tool as success. :)

Thank you!